



THE CREATIVE  
COLLEGE IN  
HUDDERSFIELD

BTEC

# STAGE MANAGEMENT

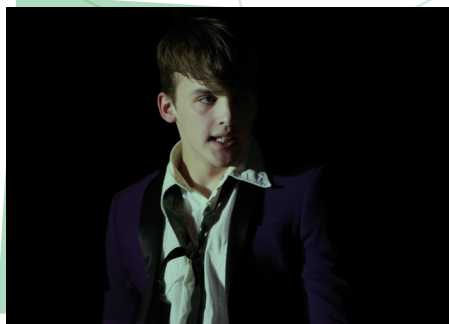


## WHY STUDY STAGE MANAGEMENT?

The course supports creative problem solving, many companies look to employ creative thinkers. Students who complete technical theatre work such as building scenery, hanging lights, making props, running the show learn how to think on their feet, to identify problems, evaluate a range of possible solutions, and figure out what to do. Creative ability, Creative problem solving, can be directly applicable to any career pathway.

## WHAT IS THE COURSE ABOUT?

This course will widen your understanding about the world of Performing Arts, whilst developing your production skills in our purpose-built performance spaces. You will study a variety of Production Arts disciplines and new skills which will lead to a series of practical productions in the drama studio and potential external venues.



## COURSE CONTENT

### Mandatory

Unit 2: Production Arts Workshop

Unit 3: Performing Arts Business

Unit 4: The Historical Context of Performance

Unit 6: Production Arts Planning

Unit 8: Production For Theatre Performance (Double credit)

### Specialist Units

Unit 55: Arts in the Community

Unit 58: Performing Arts Event Management

Unit 59: Assistant Stage Management

Unit 60: Deputy Stage Management

Unit 61: Stage Management

Unit 69: Stage Sound Operations

Unit 74: Working Freelance in the performing and Production Arts

Unit 79: Stage Design for Performance

Unit 82: Stage Wardrobe Management

Unit 106: Marketing for the Performing Arts

Unit 108: Production Management for Live Performance

## ASSESSMENT

The qualification consists of a combination of practical and theory based assignments. These will be assessed through assignments set by your tutor s which are internally assessed, internally verified by a second teacher, and externally assessed for final verification.

You will be assessed through a variety of projects and productions throughout the two year course.



# **FUTURE PATHWAYS IN STAGE MANAGEMENT!**

**BOX OFFICE**

**VOICE OVER  
ACTOR**

**WARDROBE  
DESIGNER**

**THEATRE**

**HOLIDAY  
ENTERTAINMENT**

**STUNT ACTOR**

**EVENTS  
ORGANISER**

**STAGE  
PERFORMER**

**SOUND  
ENGINEER**

**PRODUCTION  
MANAGER**

**STAGE  
DIRECTOR**

**TELEVISION  
WORK**

**LIGHTING  
TECHNICIAN**

**RECORDING  
ARTIST**

**MUSICAL RETAIL**

**ACTOR**

**DIRECTOR**

**STAGE  
MANAGEMENT**

**SET DESIGN**

---

For more information about this course or the Studio School, contact us via phone: **01484 382140**, email us: **hello@studio-school.org.uk**, or visit our website: **www.studio-school.org.uk**

---

**The Creative & Media  
Studio School**  
Netherhall Learning Campus  
Rawthorpe Terrace,  
Huddersfield,  
HD5 9NY